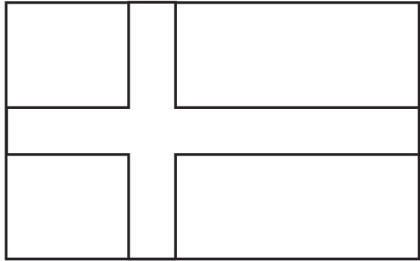


SWEDEN

SWEDEN FUN FACTS


Sweden Flag

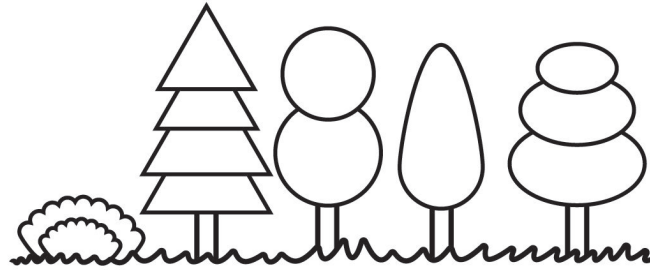


Color Sweden in the map:

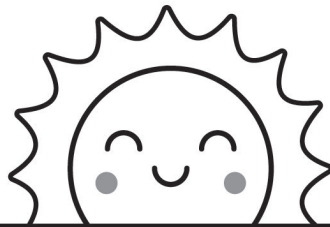


 **Language:** Swedish.

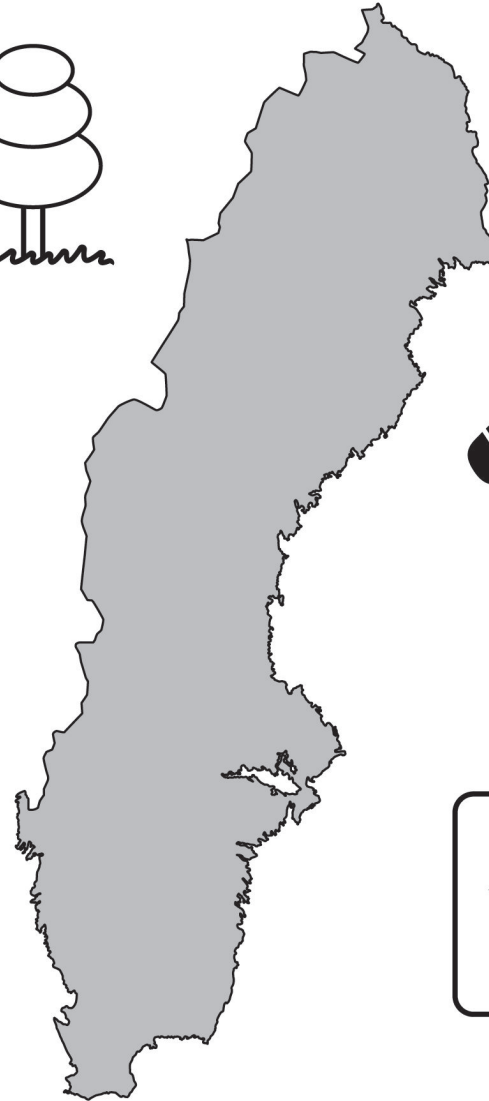
 **Landscape:** Sweden is home to thousands of lakes, fresh water streams, rolling hills, mountains, and forests.



Forests cover over 50% of Sweden, there are also around 100,000 lakes and over 24,000 islands throughout the country.



Sweden is often very dark! in January in Stockholm the sun rises at 8:47 am and sets at 2:55 pm, while in July the sun rises at 3:40 am and sets 10:00 pm.



Dala Horses are known as an international symbol of Sweden. They are small wooden toy horses painted with the bright colors and patterns of the walls and furniture found in Swedish buildings. After the 1939 World's Fair, Sweden sent more than 20,000 Dala Horses to the US.